



**India Meteorological Department  
(Ministry of Earth Sciences)  
NATIONAL BULLETIN NO. 2 (BoB/02/2025)**

**TIME OF ISSUE: 2030 HOURS IST**

**DATED: 14.07.2025**

**FROM: INDIA METEOROLOGICAL DEPARTMENT**

**(FAX NO. 24643965/24699216/24623220)**

**TO: CONTROL ROOM, NDM, MINISTRY OF HOME AFFAIRS (FAX.NO. 23093750)**

**CONTROL ROOM NDMA (FAX.NO. 26701729)**

**CABINET SECRETARIAT (FAX.NO.23012284, 23018638)**

**PS TO HON'BLE MINISTER FOR S & T AND EARTH SCIENCES (FAX NO.23316745)**

**SECRETARY, MOES (FAX NO. 24629777)**

**H.Q. (INTEGRATED DEFENCE STAFF AND CDS) (FAX NO. 23005137/23005147)**

**DIRECTOR GENERAL, DOORDARSHAN (23385843)**

**DIRECTOR GENERAL, AIR (23421105, 23421219)**

**PIB MOES (FAX NO. 23389042)**

**UNI (FAX NO. 23355841)**

**D.G. NATIONAL DISASTER RESPONSE FORCE (NDRF) (FAX NO. 26105912, 2436 3260)**

**DIRECTOR, PUNCTUALITY, INDIAN RAILWAYS (FAX NO. 23388503)**

**CHIEF SECRETARY, ODISHA (FAX NO. 0674-2536660)**

**CHIEF SECRETARY, WEST BENGAL (FAX NO. 033-22144328)**

**CHIEF SECRETARY, GOVT. OF SIKKIM (FAX NO.0359-2222851)**

**CHIEF SECRETARY, GOVT. OF BIHAR (FAX NO. 0612-2217085)**

**CHIEF SECRETARY, GOVT. OF JHARKHAND (FAX NO. 0651-2400255)**

**CHIEF SECRETARY, GOVT. OF CHHATTISGARH (FAX NO. 0771-2221206)**

**CHIEF SECRETARY, GOVT. OF MADHYA PRADESH (FAX NO. 0755-2551521)**

**CHIEF SECRETARY, GOVT. OF RAJASTHAN (FAX NO. 0141-2227114)**

**CHIEF SECRETARY, GOVT. OF ASSAM (FAX NO. 0361-2260900)**

**CHIEF SECRETARY, GOVT. OF MEGHALAYA (FAX NO. 0364-2225978)**

**Subject: (A) Depression over southeast Gangetic West Bengal and adjoining Bangladesh  
(B) Well Marked Low pressure area over northeast Rajasthan**

**(A) Depression over southeast Gangetic West Bengal and adjoining Bangladesh**

The depression over Southeast Gangetic West Bengal and adjoining Bangladesh moved west-northwestwards with speed of 8 kmph during past 6 hours and lay centred at 1730 hrs IST of today, the 14th July 2025 over the same region near Lat. 23.3°N and Long. 88.4°E, about 90 km north of Kolkata and 50 km east of Burdwan.

It is likely to move further west-northwestwards across Gangetic West Bengal during next 24 hours.

**(B) Well Marked Low pressure area over northeast Rajasthan**

The well marked Low Pressure area over northeast Rajasthan & adjoining northwest Madhya Pradesh moved west-northwestwards and lay over northeast Rajasthan at 1730 hrs IST of today, the 14th July, 2025.

It is likely to continue to move further slowly west-northwestwards across Rajasthan during next 2 days.

## **Warnings:**

### **(i) Rainfall Warning:**

**Odisha:** Light to moderate rainfall at most places with heavy to very heavy rainfall at isolated places during 14<sup>th</sup> to 16<sup>th</sup> July and heavy rainfall at isolated places on 17<sup>th</sup> July.

**West Bengal & Sikkim:** Light to moderate rainfall at most places with heavy to very heavy rainfall at a few places with extremely heavy rainfall (**≥ 21 cm**) at isolated places over coastal Gangetic West Bengal and heavy rainfall at isolated places Sub-Himalayan West Bengal on 14<sup>th</sup> July and heavy rainfall at isolated places over West Bengal & Sikkim on 15<sup>th</sup> July.

**Jharkhand:** Light to moderate rainfall at most places with heavy to very heavy rainfall at isolated places during 14<sup>th</sup> – 16<sup>th</sup> July and extremely heavy rainfall at isolated places on 14<sup>th</sup> July.

**Bihar:** Light to moderate rainfall at most places with heavy rainfall at isolated places on 14<sup>th</sup> July, and heavy to very heavy rainfall at isolated places on 15<sup>th</sup> & 16<sup>th</sup> July.

**Chhattisgarh:** Light to moderate rainfall at most places with heavy to very heavy rainfall at isolated places on 14<sup>th</sup> July; heavy to extremely heavy at isolated places on 15<sup>th</sup>; heavy to very heavy rainfall at isolated places on 16<sup>th</sup> July and heavy rainfall at isolated places on 17<sup>th</sup> July.

**East Madhya Pradesh:** Light to moderate rainfall at most places with heavy rainfall at isolated places on 14<sup>th</sup> & 15<sup>th</sup> July and heavy to very heavy rainfall at isolated places during 16<sup>th</sup> -17<sup>th</sup> July.

**West Madhya Pradesh:** Light to moderate rainfall at most places with heavy to very heavy rainfall at isolated places on 14<sup>th</sup> July and heavy rainfall at isolated places during 15<sup>th</sup> -18<sup>th</sup> July.

**East Rajasthan:** Light to moderate rainfall at most places with heavy to very heavy rainfall at a few places with extremely heavy rainfall (**≥ 21 cm**) at isolated places on 14<sup>th</sup> & 15<sup>th</sup> July; heavy rainfall at isolated places on 16<sup>th</sup> & 17<sup>th</sup> July.

**West Rajasthan:** Light to moderate rainfall at most places with heavy to very heavy rainfall at a few places with extremely heavy rainfall (**≥ 21 cm**) at isolated places on 14<sup>th</sup> & 15<sup>th</sup> July; heavy to very heavy rainfall at isolated places on 16<sup>th</sup> and heavy rainfall at isolated places on 17<sup>th</sup> July.

**Gujarat:** Light to moderate rainfall at most places with heavy to very heavy rainfall at isolated places over Gujarat region on 14<sup>th</sup> and heavy rainfall at isolated places on 15<sup>th</sup> July. Heavy rainfall at isolated places over Saurashtra & Kutch on 14<sup>th</sup> July.

**East Uttar Pradesh:** Light to moderate rainfall at most places with heavy to very heavy rainfall at isolated places on 14<sup>th</sup> July and heavy rainfall at isolated places during 15<sup>th</sup> – 18<sup>th</sup> July with heavy to very heavy rainfall at isolated places on 17<sup>th</sup> July.

**West Uttar Pradesh:** Light to moderate rainfall at most places with heavy rainfall at isolated places during 16<sup>th</sup> – 18<sup>th</sup> July.

**Assam:** Light to moderate rainfall at most places with heavy to very heavy rainfall at isolated places on 14<sup>th</sup> & 15<sup>th</sup> July and heavy rainfall at isolated places on 17<sup>th</sup> July.

**Meghalaya:** Light to moderate rainfall at most places with heavy to very heavy rainfall at isolated places on 14<sup>th</sup> & 15<sup>th</sup> July and heavy rainfall at isolated places on 17<sup>th</sup> July.

### **(ii) Wind Warning:**

- ❖ Squally wind speed reaching 40-50 kmph gusting to 60 kmph is prevailing over north Bay of Bengal, along & off Odisha, West Bengal and Bangladesh coasts for next 24 hours. Squally wind speed

reaching 30-40 kmph gusting to 50 kmph is likely over West Bengal, Jharkhand, and North Odisha during next 24 hours.

- ❖ Squally wind speed reaching 30-40 kmph gusting to 50 kmph is likely over northeast Rajasthan and adjoining northwest Madhya Pradesh for next 24 hours, and over south Rajasthan & neighbourhood for subsequent 24 hours.

**(iii) Sea Condition:**

**Sea condition is very likely to be rough to very rough over** north Bay of Bengal and along & off Odisha, West Bengal and Bangladesh coasts during next 24 hours.

**(iv) Fishermen Warning:**

Fishermen are advised not to venture into north Bay of Bengal, along & off Odisha, West Bengal and Bangladesh coasts for next 24 hours.

**(v) Impact Expected and Action Suggested due to heavy rainfall and squally winds**

**Impact expected:**

- ❖ Breaking of tree branches, uprooting of small trees like banana, papaya, drum sticks. Strong wind and rain may damage plantation, horticulture and standing crops.
- ❖ Partial damage to vulnerable structures due to strong winds and rain.
- ❖ Minor damage to kutcha houses/walls, huts and roads due to heavy rain.
- ❖ Loose objects may fly.
- ❖ Onshore and offshore operations may get affected.
- ❖ Small ships, trawlers and boats may be affected.
- ❖ Road and rail traffic may be affected due to heavy rain and squally winds.
- ❖ There could be localised landslides, mudslides, landslips, water logging, inundation and flooding over low lying areas.
- ❖ Occasional reduction in visibility due to heavy rainfall.
- ❖ Helicopter services may get affected.

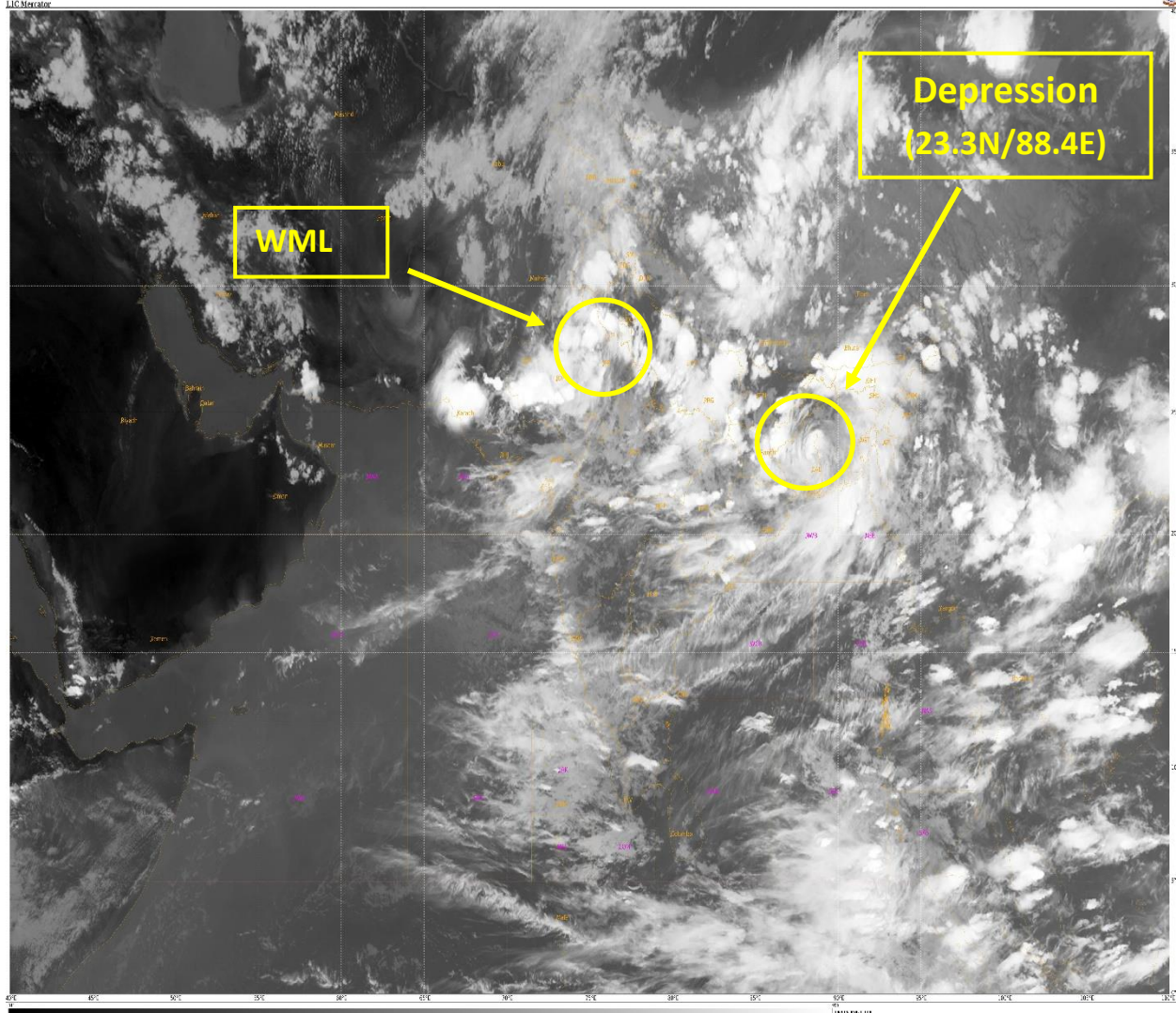
**Action suggested:**

- ❖ People are advised to keep a watch on the weather for worsening conditions and be ready to move to safer places accordingly.
- ❖ Take safe shelters; do not take shelter under trees, as there could be lightning.
- ❖ In case of expected lightning, unplug electrical/ electronic appliances, immediately, get out of water bodies and keep away from all the objects that conduct electricity.
- ❖ Tourism and recreational activities to be regulated.
- ❖ Onshore and offshore activities to be judiciously regulated.
- ❖ Helicopter services to be regulated.

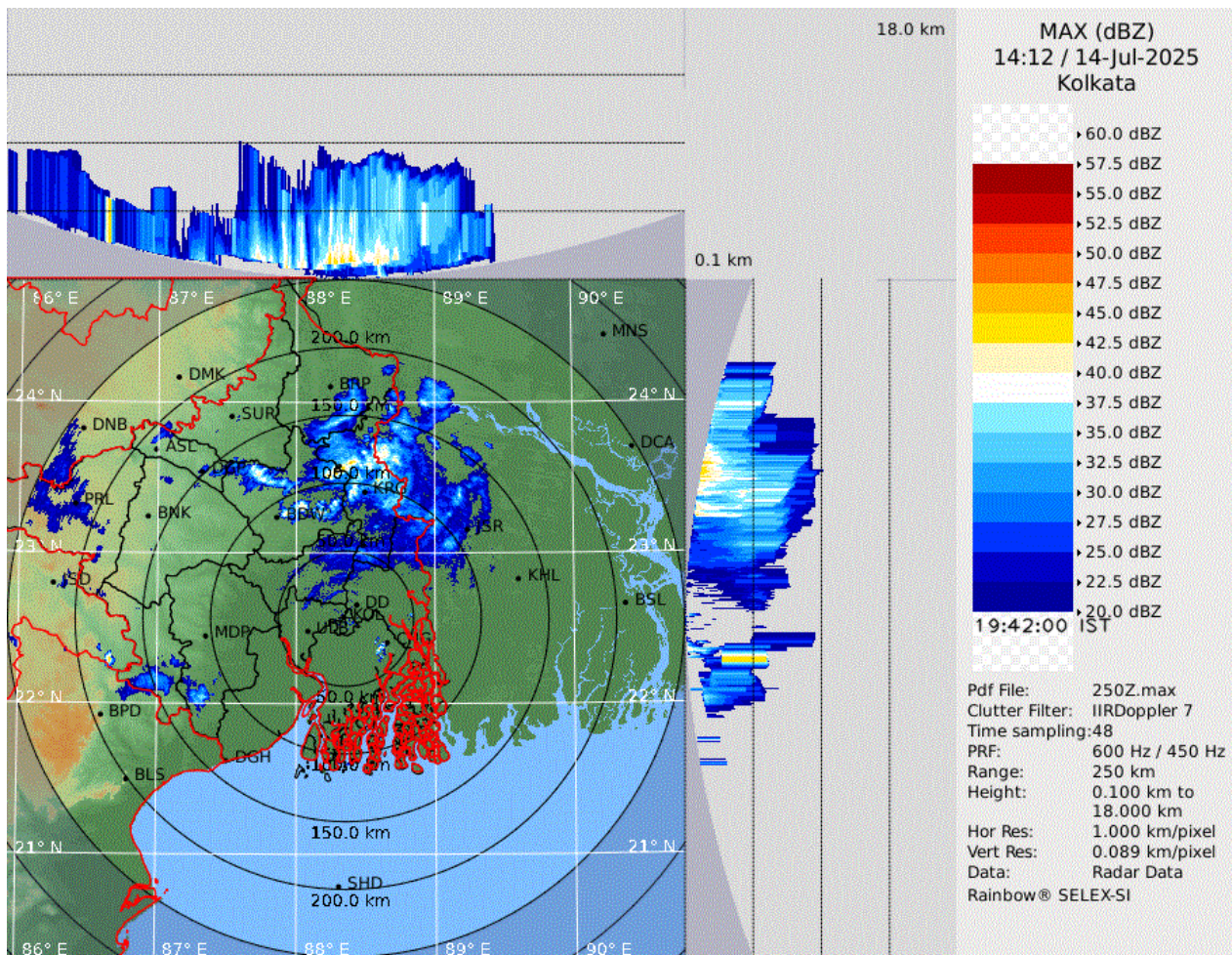
**Next bulletin will be issued at 0230 hours IST of tomorrow, the 15<sup>th</sup> July, 2025.**

**(Ananda Kumar Das)  
Scientist F, New Delhi**

*Copy to: ACWC Kolkata/ACWC Chennai/CWC Bhubaneswar/CWC Vishakhapatnam/Meteorological Centres- Port Blair/ Itanagar/ Kohima/ Agartala/ Gangtok/ Imphal/ Aizwal/ Shillong/ Gangtok/ Regional Meteorological Centre Guwahati*







Latest Radar Image of DWR Kolkata





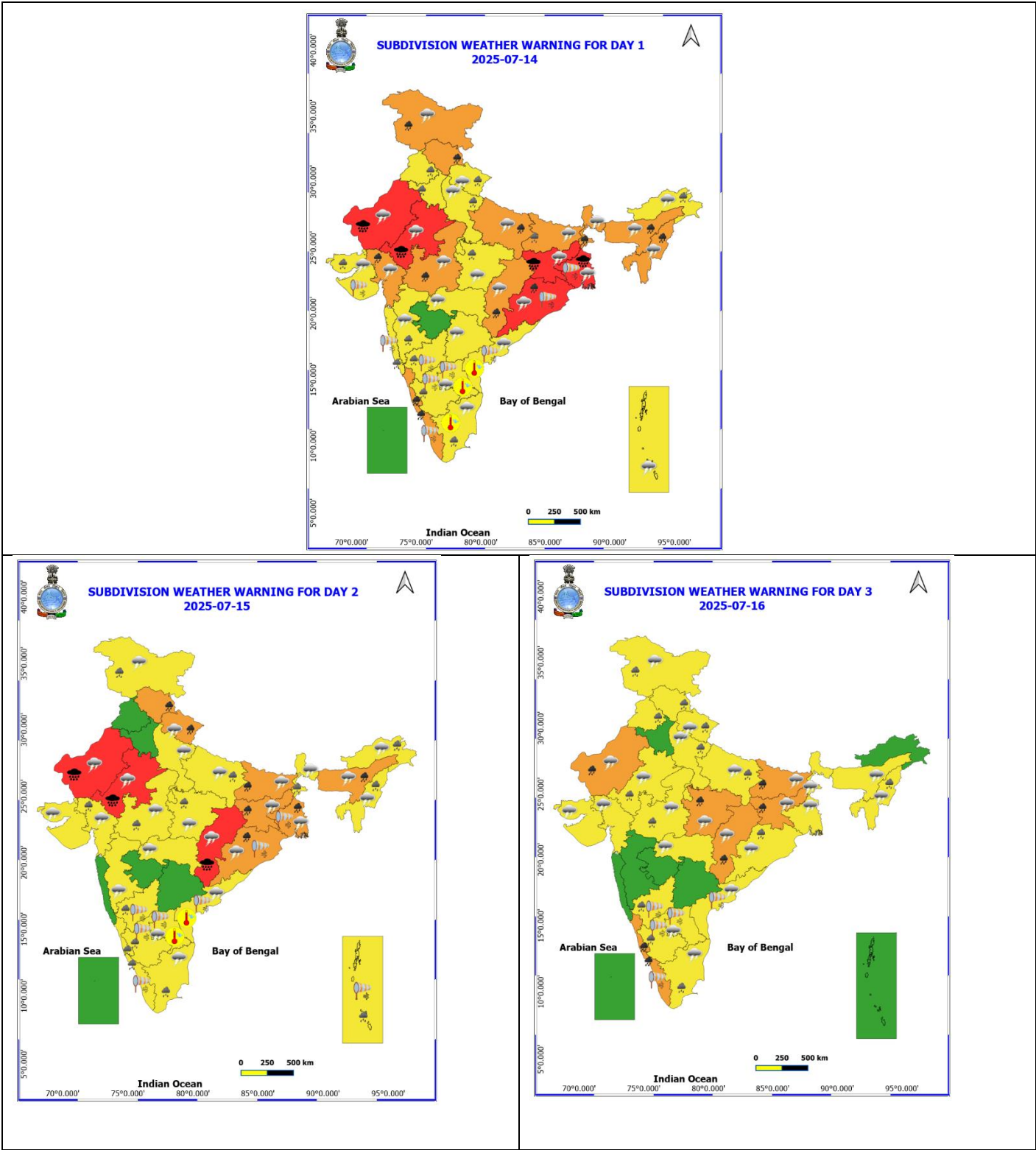
**OBSERVED AND FORECAST TRACK OF DEPRESSION OVER SOUTHEAST GANGETIC WEST BENGAL AND ADJOINING BANGLADESH ON 1200 UTC (1730 Hrs. IST) OF 14<sup>th</sup> JULY 2025**

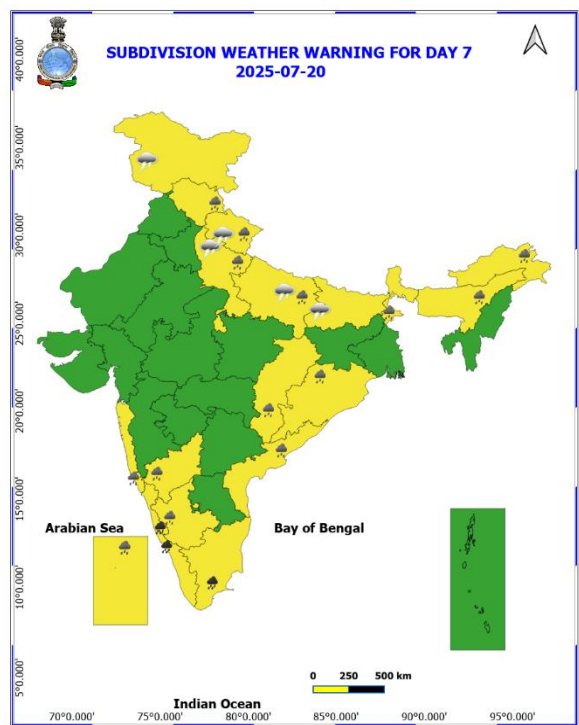
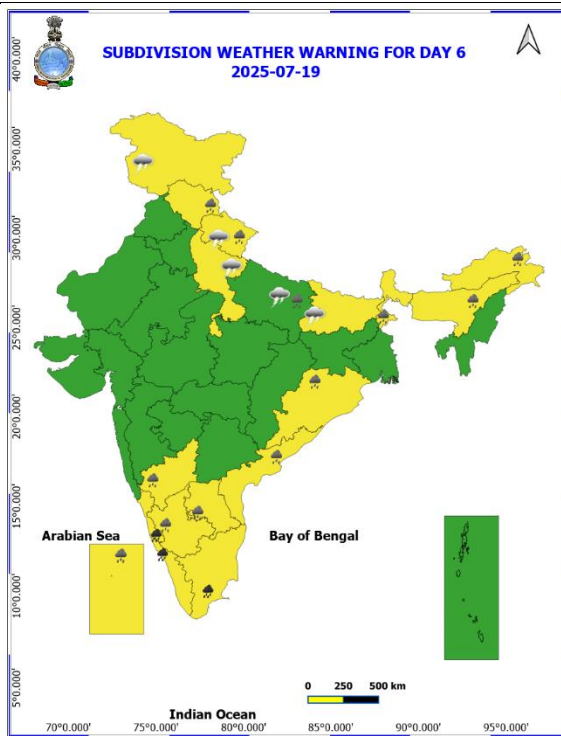
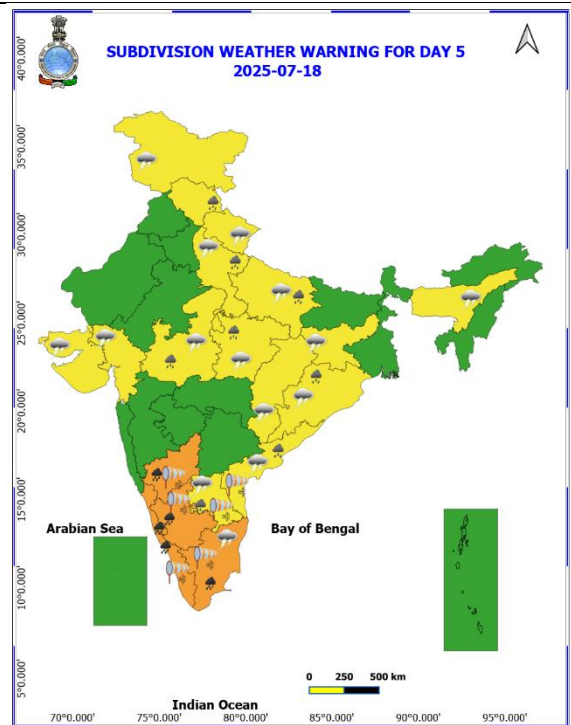
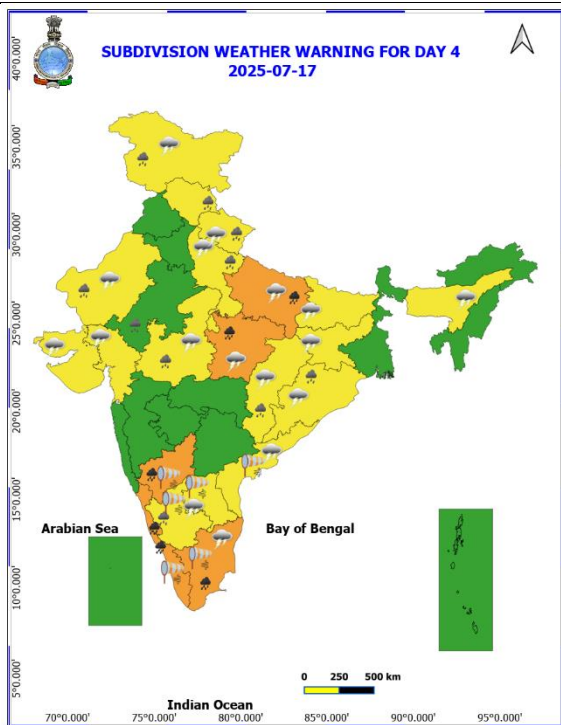


DATE/TIME : IN UTC  
IST : UTC + 0530  
KT : NAUTICAL MILE S/HOUR = 1.85 KM/HOUR  
LPA : LOW PRESSURE AREA  
WML : WELL MARKED LOW PRESSURE AREA  
D : DEPRESSION (17-27 KT)  
DD : DEEP DEPRESSION (28-33 KT)  
CS : CYCLONIC STORM (34-47 KT)  
SCS : SEVERE CYCLONIC STORM (48-63 KT)  
VSCS : VERY SEVERE CYCLONIC STORM (64-89 KT)  
ECS : EXTREMELY SEVERE CYCLONIC STORM (90-119 KT)  
SuCS : SUPER CYCLONIC STORM ( $\geq 120$  KT)

● LESS THAN 34 KT  
⬮ 34-47 KT  
⬮  $\geq 48$  KT  
— OBSERVED TRACK  
— FORECAST TRACK  
▲ CONE OF UNCERTAINTY

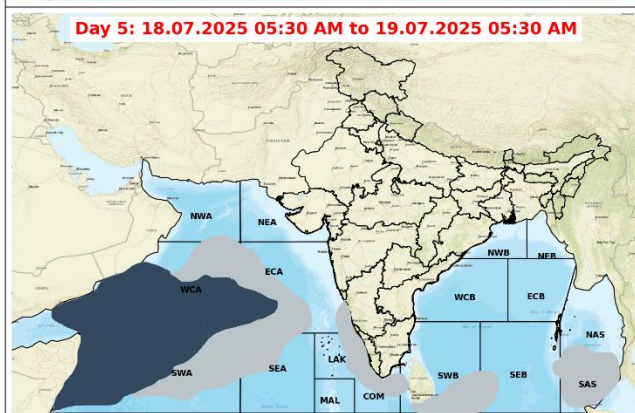
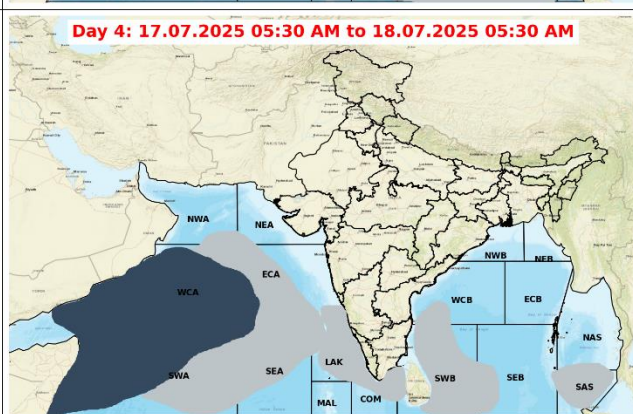
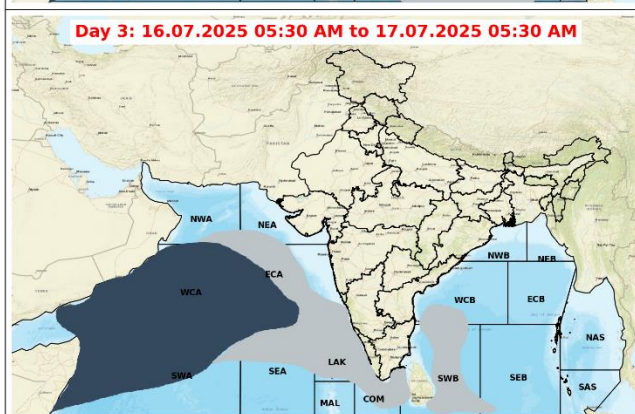
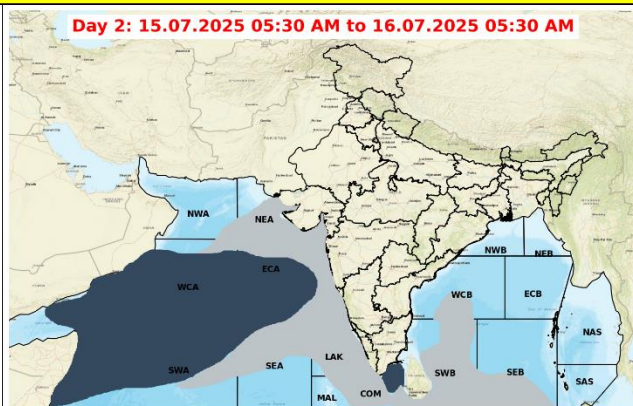
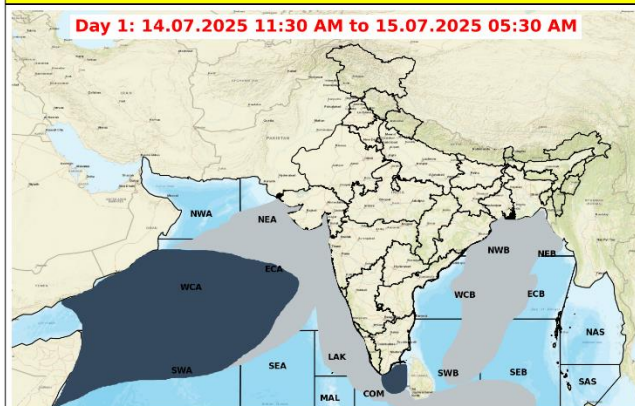
# Weather Warning Graphics







## Fishermen Warning Graphics



### Legend

	Squally wind with speed 55-65 kmph gusting to 75 kmph		CS with Gale winds with speed 60-80 kmph gusting to 90 kmph
	Squally Weather with wind speed 40-50 kmph gusting to 60 kmph		SCS with Gale wind speed 90-110 kmph gusting to 120 kmph
	Squally Weather with wind speed 45-55 kmph gusting to 65 kmph		VSCS with Gale wind speed 120-165 kmph gusting to 185 kmph
	Squally wind with speed 45-55 kmph gusting to 65 kmph		ESCS with Gale wind speed 165-220 kmph gusting to 245 kmph
	Squally wind with speed 50-60 kmph gusting to 70 kmph		

Fishermen are advised not to venture into the marked areas.



## Flash Flood Guidance

### **24 hours Outlook for the Flash Flood Risk (FFR) till 1730 IST of 15-07-2025:**

**Moderate to High flash flood risk** likely over few watersheds & neighbourhoods of following Met Sub-divisions during next 24 hours.

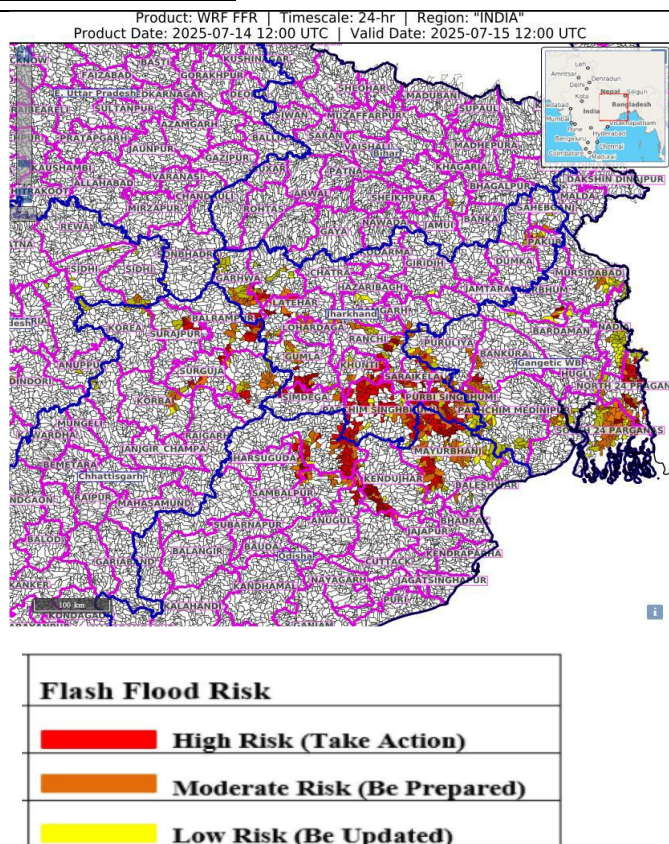
**Chhattisgarh** - Balarampur, Jashpur, Korba, Korea, Raigarh, Surajpur and Surguja districts.

**Odisha** - Deogarh, Kendujhar, Mayurbhanj, Sambalpur and Sundargarh districts.

**Gangetic West Bengal** - Bankura, Birbhum, Eastmednipur, Mursidabad, Nadia, North 24 Pragana, Pashchim Medinipur, Puruliya and South 24 Parganas districts.

**Jharkhand** - Bokaro, East Singhbhum, Garhwa, Gumla, Khunti, Latehar, Lohardaga, Palamu, Ranchi, Saraikela, Simdega and West Singhbhum districts.

Surface runoff/ Inundation may occur at some fully saturated soils & low-lying areas over Area of Concern (AoC) as shown in map due to expected rainfall occurrence in next 24 hours.



### **24 hours Outlook for the Flash Flood Risk (FFR) till 1730 IST of 15-07-2025 :**

**Moderate flash flood risk** likely over few watersheds & neighbourhoods of following Met Sub-divisions during next 24 hours.

**East Rajasthan** - Ajmer, Banswara, Baran, Bhilwara, Jaipur, Udaipur, Chittaurgarh, Jhalawar, Kota, Pratapgarh, Rajsmand, Sikar, Swaimadhopur and Tonk districts.

**West Rajasthan** - Nagaur and Pali districts.

**West Madhya Pradesh** – Sheopur, Guna, Neemach, and Mandsaur districts  
Surface runoff/ Inundation may occur at some fully saturated soils & low-lying areas over Area of Concern (AoC) as shown in map due to expected rainfall occurrence in next 24 hours.

